

# Zealcorps Company Introduction

by ShriShailesh



Visit Our Website  
**zealcorps.com**



## About Company

With over 15 years of expertise in Building and Industrial Automation, we have successfully delivered large-scale projects across commercial, residential, institutional, and industrial sectors. Backed by a team of 40+ experts, we are ISO 45001 and BizSafe Star certified, with ME02 Level 2 accreditation. Our commitment to excellence ensures top-tier automation solutions with BCA-overhead work compliance.



### CEO Profile

Shrishalish – CEO

Shrishalish, CEO of Entity, is a visionary leader transforming the automation industry with over 15 years of expertise. Under his leadership, Entity delivers cutting-edge solutions, achieving ISO 45001, BizSafe Star, and ME02 Level 2 certifications



## **Company Vision**

**To aim for excellence and strive on with diligence in understanding and satisfying our client's needs.**

## **Company Mission**

**To lead with efficiency and embrace innovation to provide top notch services.**

# OUR HISTORY

Since 2018, Zealcorps has been at the forefront of building automation, delivering smart solutions that enhance efficiency, security, and sustainability

## 2018

- **Seamless Automation:** Integrating cutting-edge AI and IoT to create intelligent, energy-efficient, and self-sustaining buildings.
- **Enhanced Security & Efficiency:** Providing real-time monitoring, predictive maintenance, and automated controls for optimal performance and safety.

## 2019

- **Scalable & Future-Ready:** Designed to adapt to evolving technology and client needs, ensuring long-term efficiency and sustainability.
- **Client-Centric Approach:** Delivered a customized solution that enhances operational efficiency, security, and energy management.

## 2020

- **Smart Energy Optimization:** Utilizing AI-driven analytics to reduce energy consumption and lower operational costs.
- **Real-Time Monitoring & Control:** Providing seamless remote access to building systems for enhanced efficiency and convenience.

## 2021 - 2024

- **Partnered with leading technology providers** to enhance system integration.
- **2022 – Launched AI-driven automation solutions** for smart buildings.
- **2023 – Recognized as a top innovator** in the building automation industry.
- **2024 & Beyond – Continuing our mission** to create intelligent worldwide."



# OUR CERTIFICATES



**Building and Construction Authority**  
An MND Statutory Board

Our Ref : BCA ID 87.1.9  
Date : 11-Oct-2024

**BCA Procurement Policies Department**  
52 Jurong Gateway Road, #12-01,  
Singapore 608550

ZEALCORPS PTE. LTD.  
280 WOODLANDS INDUSTRIAL PARK E5  
#10-52 HARVEST@WOODLANDS  
SINGAPORE 757322

Dear MDM LATHA VIKRAM

**Application Result**

Thank you for your application submitted on 23-Jul-2024.

I am pleased to inform you that your application has been approved for one or more of the following workhead(s):

Workhead	Description	Application Type	Existing Grade	Applied Grade	Approved Grade
ME02	Building Automation, Industrial & Process Control Systems	Upgrading Application	L1	L2	L2

# OUR AREA OF EXPERTISE

BMS  
Integration

1

E-Facility  
Management  
Softwares

2

Energy  
Managment  
&  
Optimization

3

IT Software  
& Hardware  
Distribution

4

Place order!


5

## Building management system (Bms Integration)

<b>DDC Programming</b>	Expert in major stand-alone and redundant PLC systems
<b>PLC Programming</b>	Simple, low-cost, and easy programming solutions
<b>SCADA Development</b>	Graphical displays, equipment status, scheduling & logging
<b>IoT</b>	Control of lighting, temperature, air quality, energy usage reports for efficiency improvements and cost savings
<b>Maintenance</b>	BMS/ IoT system maintenance, and sensor calibration/ servicing



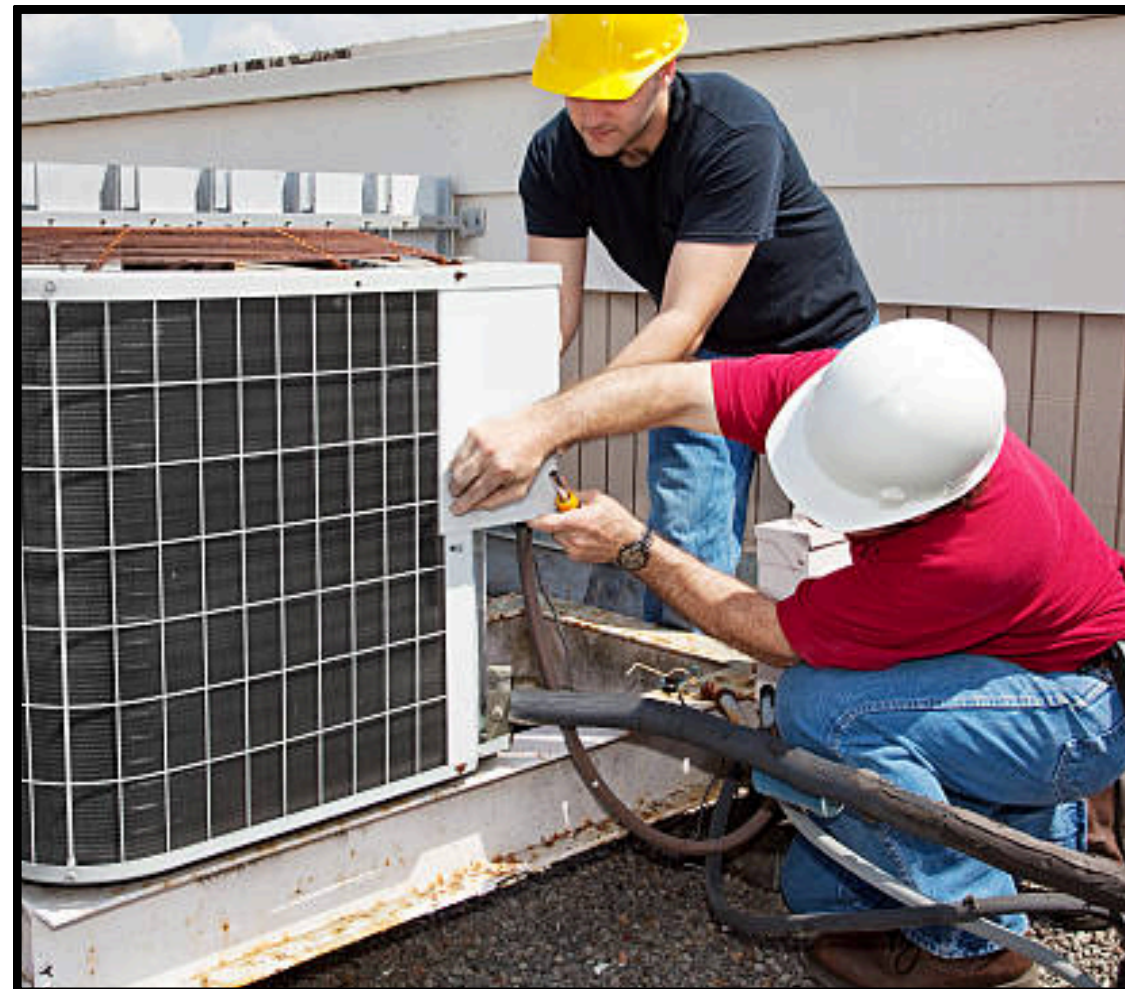
# OUR SERVICE



## BMS System Maintenance



## Air-condition (ACMV) Service & Maintenance



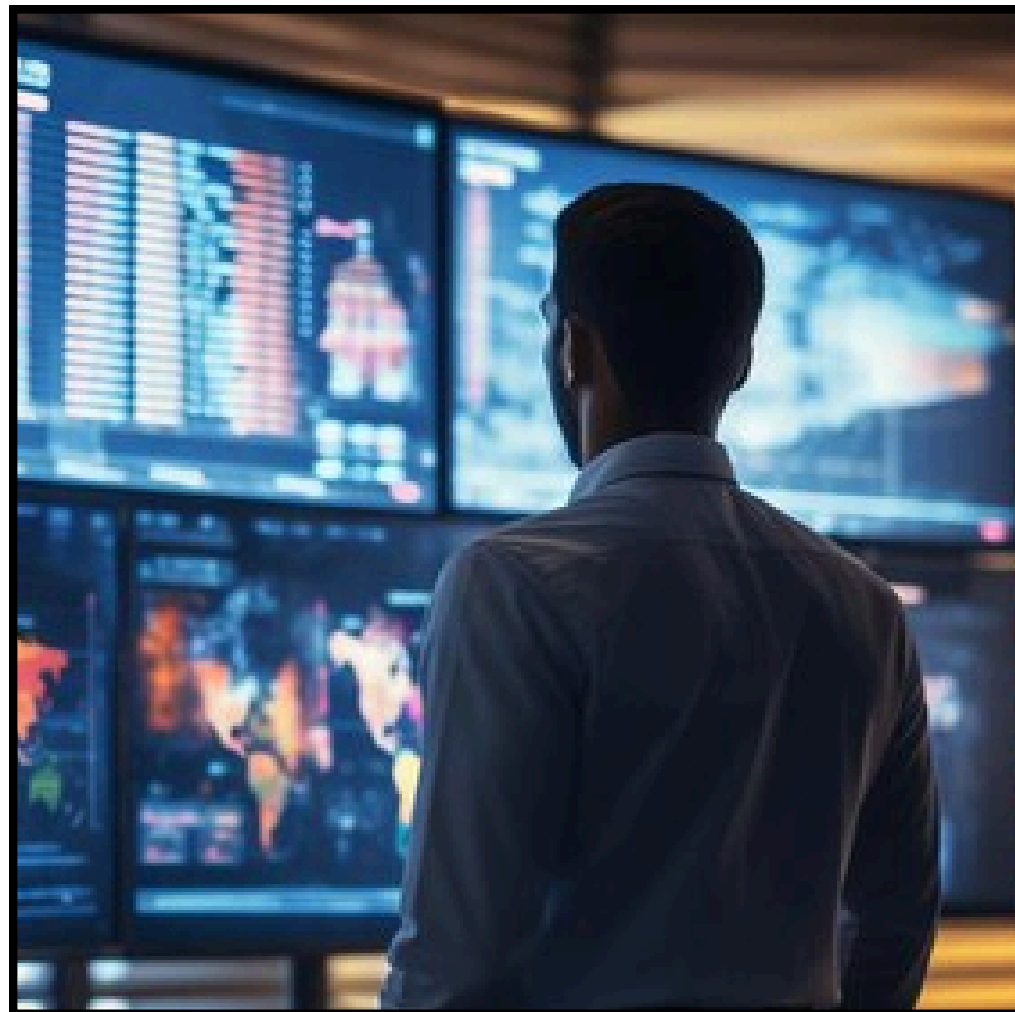
## Water Leak Detector Maintenance





# OUR SERVICE

## Integrated Building Management Systems



## Home Automation



## Industrial & Process Automation



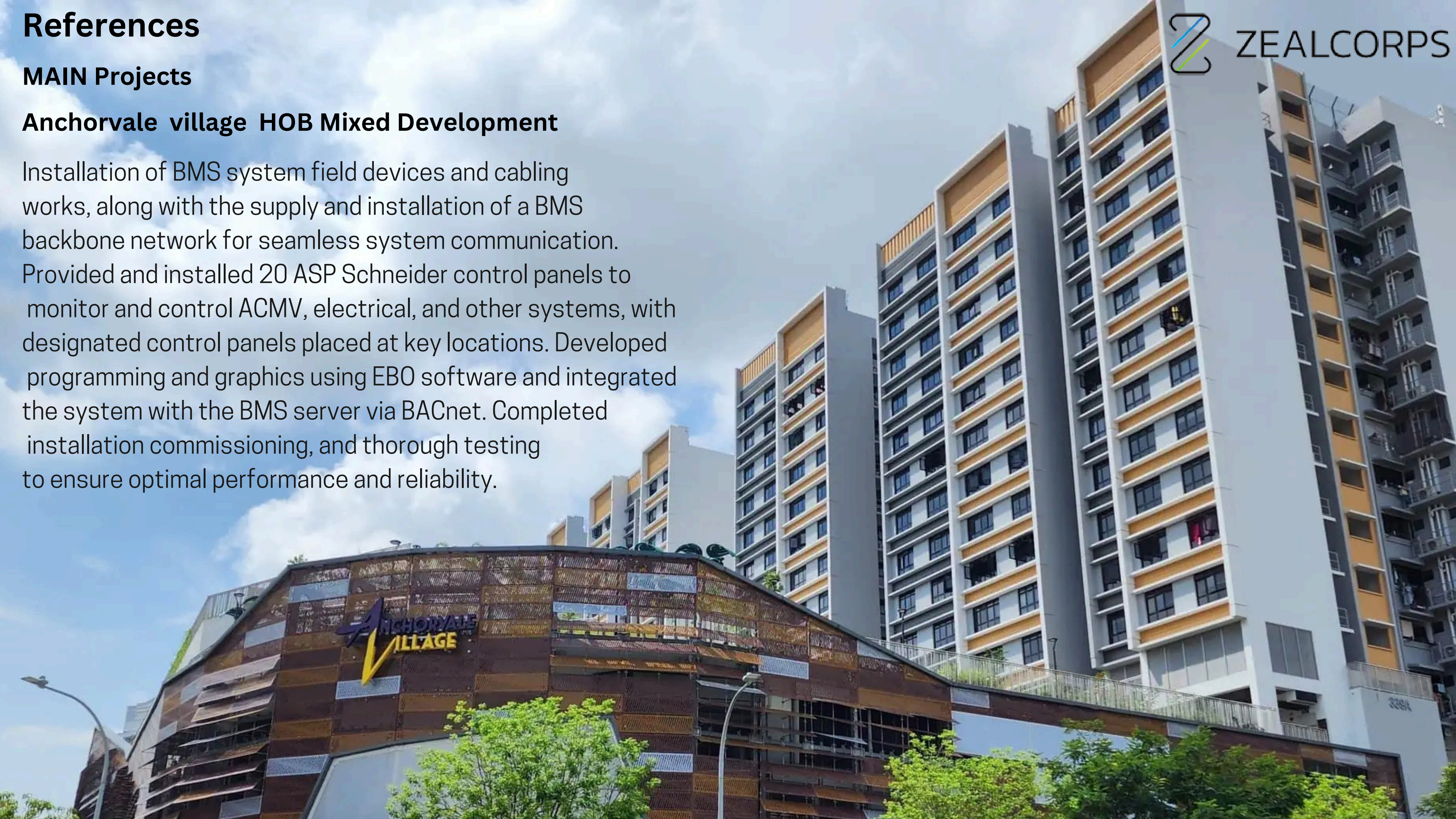


# References

## MAIN Projects

### **Anchorvale village HOB Mixed Development**

Installation of BMS system field devices and cabling works, along with the supply and installation of a BMS backbone network for seamless system communication. Provided and installed 20 ASP Schneider control panels to monitor and control ACMV, electrical, and other systems, with designated control panels placed at key locations. Developed programming and graphics using EBO software and integrated the system with the BMS server via BACnet. Completed installation commissioning, and thorough testing to ensure optimal performance and reliability.







# References

## MAIN Projects

### Sofitel Resort and Spa

The project includes the supply, installation, and engineering of a BMS for 68 villas and 5 buildings, integrating over 100 Daikin VRV units. It involves M221 PLC control panels for HVAC, electrical, and plumbing systems, along with programming and graphics using AVEVA Plant SCADA. The scope also covers installation, commissioning, and testing to ensure seamless operation.

## Raffles Sentosa Resort & Spa

This ensures efficient and sustainable operation of the chiller plant, enhancing energy performance while maintaining optimal cooling for the facility. The integration of SCADA and EBO software provides real-time monitoring, data analytics, and automated control, improving system reliability and efficiency. Through precise programming and optimization, the project aligns with industry standards and sustainability goals, contributing to a greener and more cost-effective building management solution.





# Reference MAIN Projects / BMS

## Load Bank

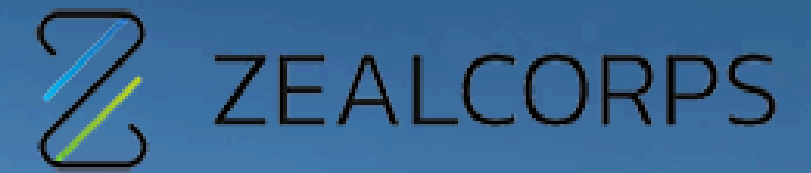
Developed a control system to test the reliability and efficiency of data center power infrastructures using a Load Bank. Supplied PanelView 7 local HMI and integrated it with the client's HMI in the control room to ensure efficient management of peak loads and power disturbances. Designed and implemented Allen Bradley PLC and MI SCADA programming using Rockwell system licensed software. Created programming and graphics using Studio 5000 and FactoryTalk View ME for seamless monitoring and control.





# Reference

MAIN Projects / BMS



## Synthesis Tower Fusionopolis

Provide and install a comprehensive Building Management System (BMS) for 15 building blocks, ensuring efficient monitoring and management of HVAC, electrical, and other building systems. Supply and install Schneider control panels (ASB, MPC, and IP-IODCC) with seamless integration to the central server using the BACnet protocol. Develop user-friendly graphics and SCADA programming for intuitive system control. Conduct thorough installation, commissioning, and testing to ensure optimal functionality and performance.



# Reference

MAIN Projects / BMS

## Synthesis Tower Fusionopolis

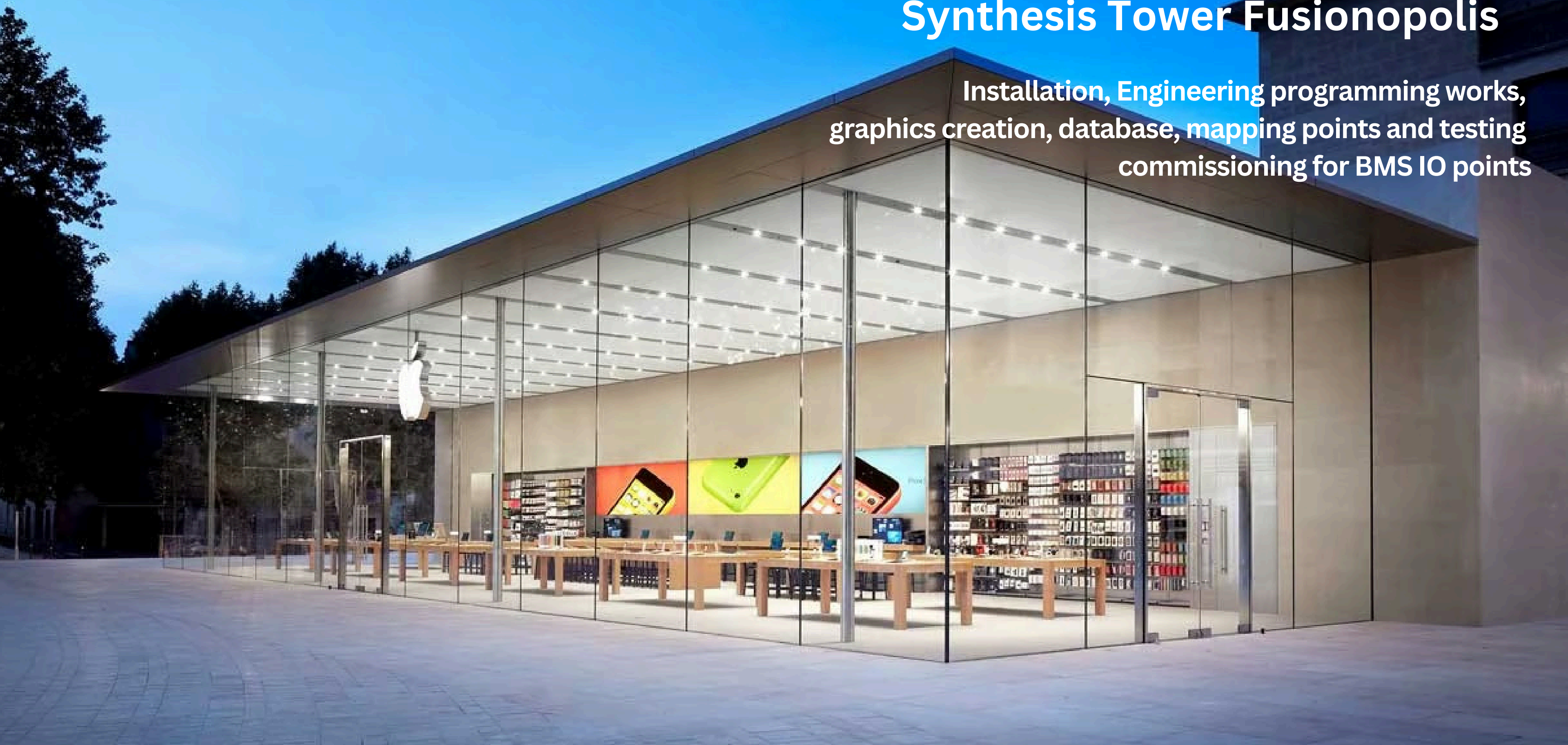
Installation of a BMS system with field devices and cabling works, including programming and graphical representation of 10 AHU units using Schneider Electric EBO and ASP controllers via BACnet protocol. Integrated with over 40 Johnson Control VAV controllers via MSTP protocol and more than 800 FCU thermostats communicating through Modbus, connected to Schneider Electric ASP controllers and Moxa devices. Seamlessly linked with the fire system, jet fans, over 100 DPMs, 65 BTU meters, and 25+ DWMs using Modbus and M-Bus protocols for comprehensive building management.



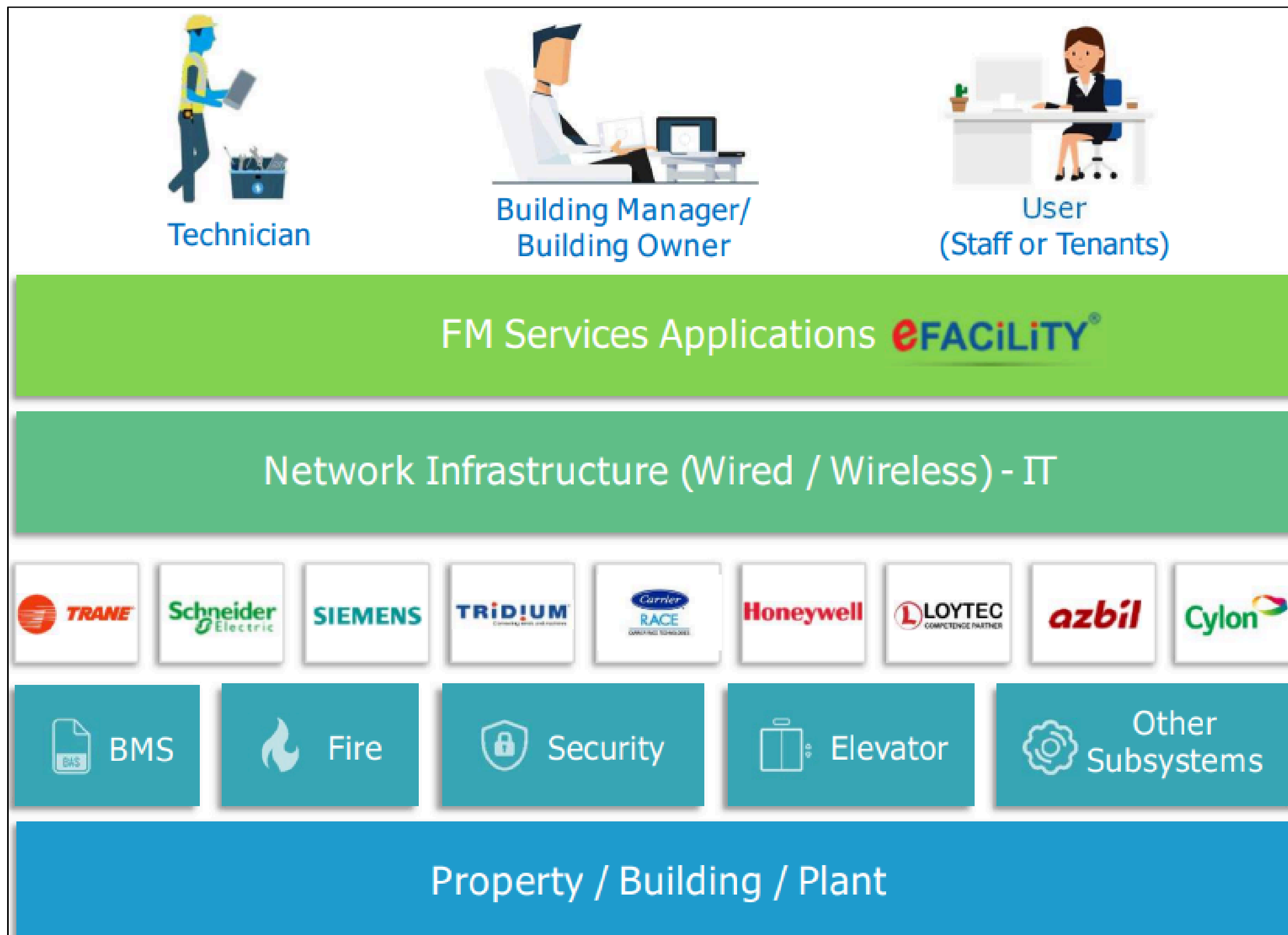


## Synthesis Tower Fusionopolis

Installation, Engineering programming works,  
graphics creation, database, mapping points and testing  
commissioning for BMS IO points



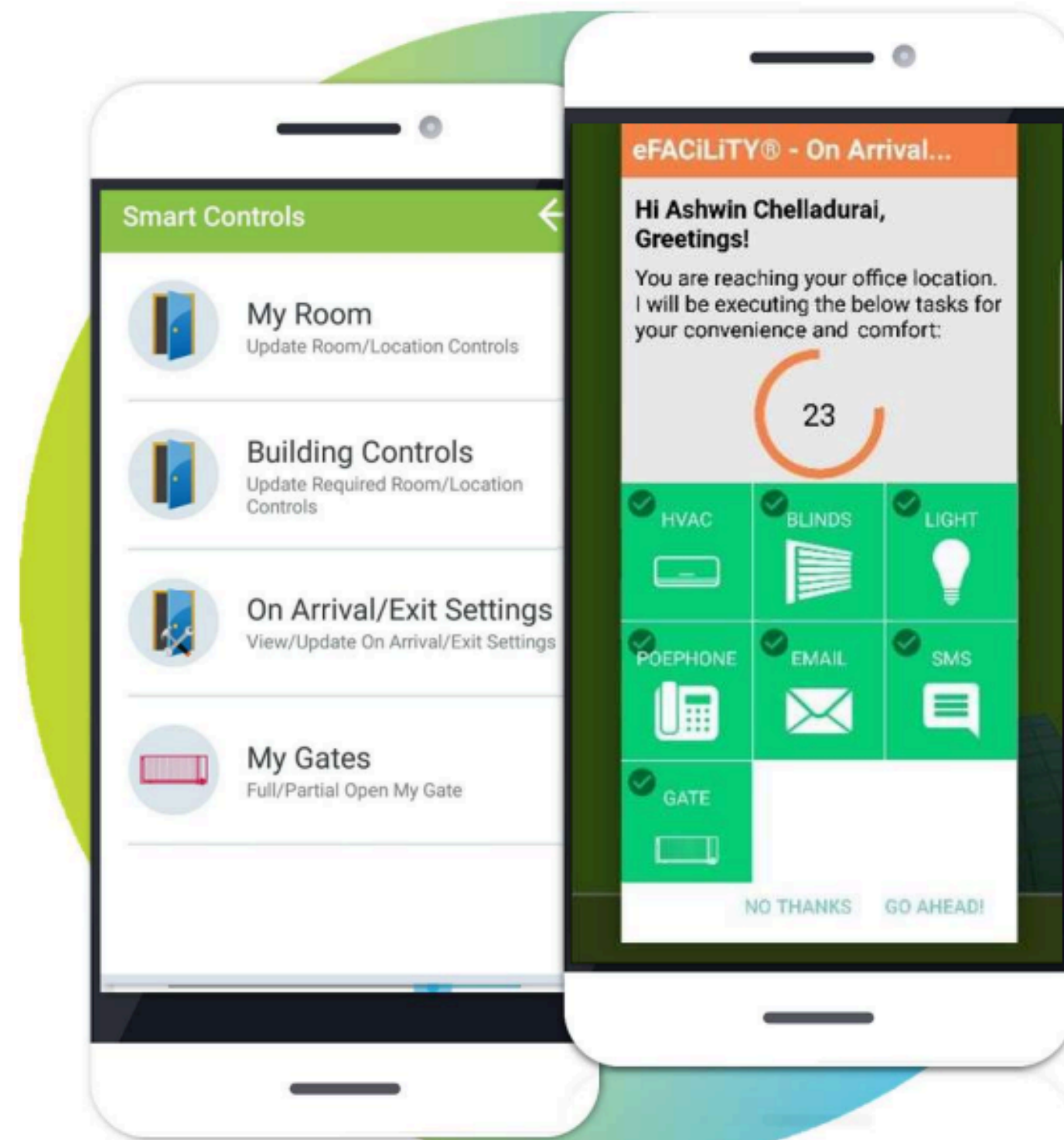
# Smart Building Controls



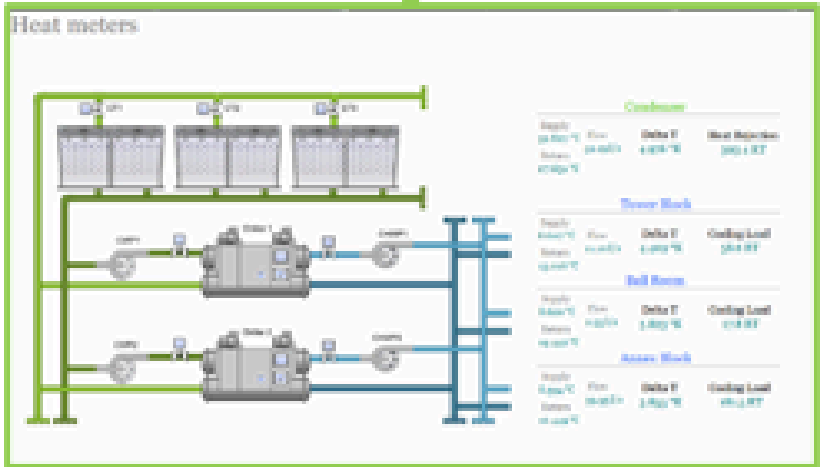
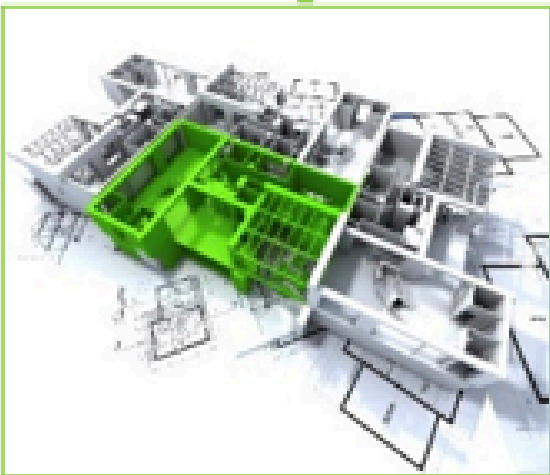
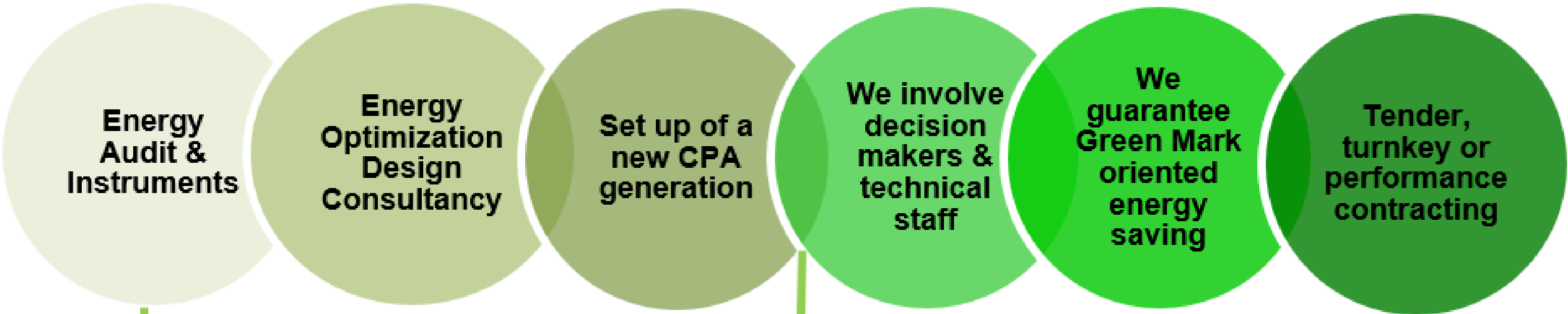
# SMART FACILITY MANAGEMENT USING MOBILE DEVICES



## E facility users



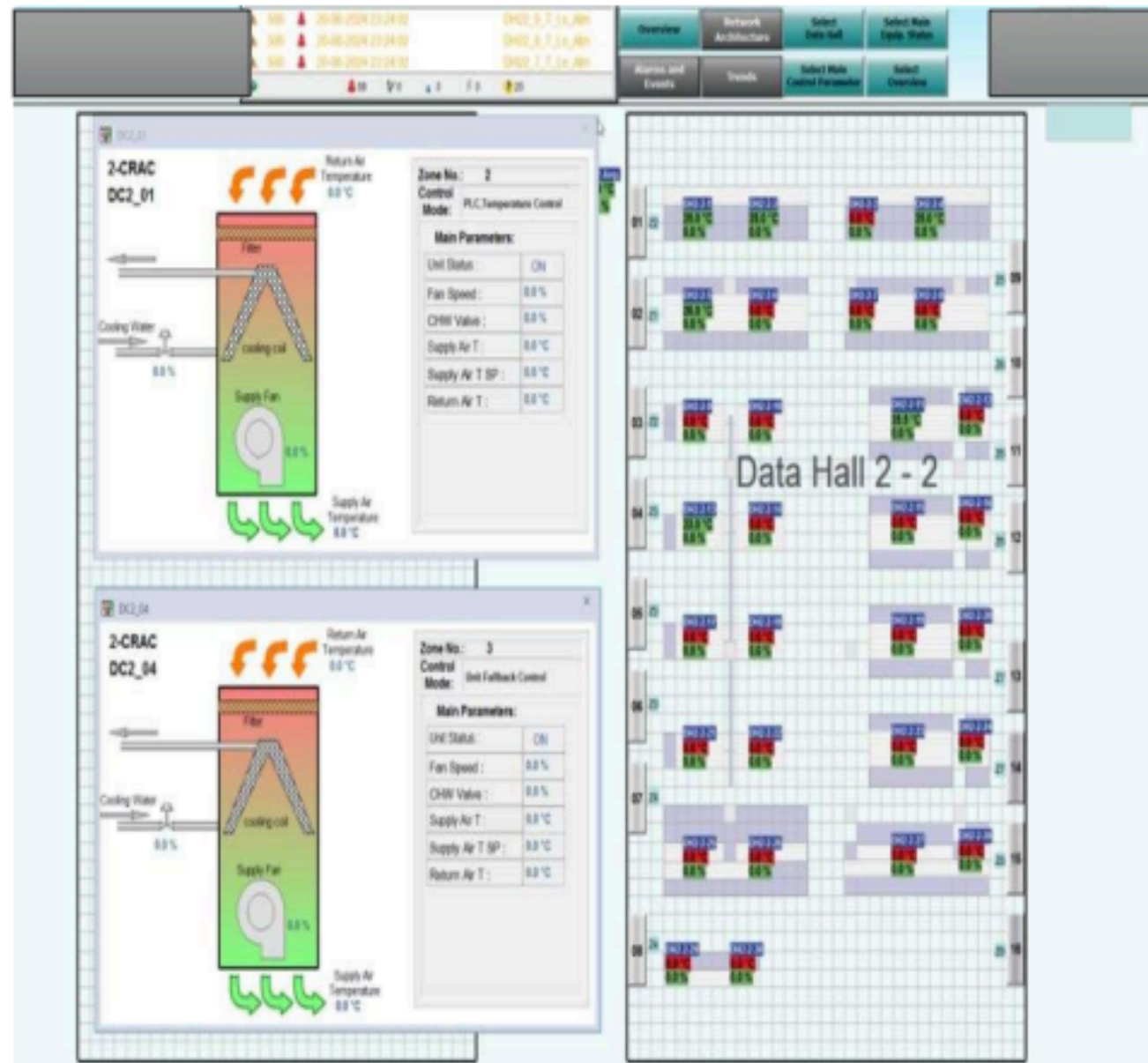
# Energy Management





# DATA Center

## Data Hall (Graluar Control)



Owner : Data Centre

Industry : Data Centre Critical Facility

No of IO Points : 1200

Software : Rockwell Automation

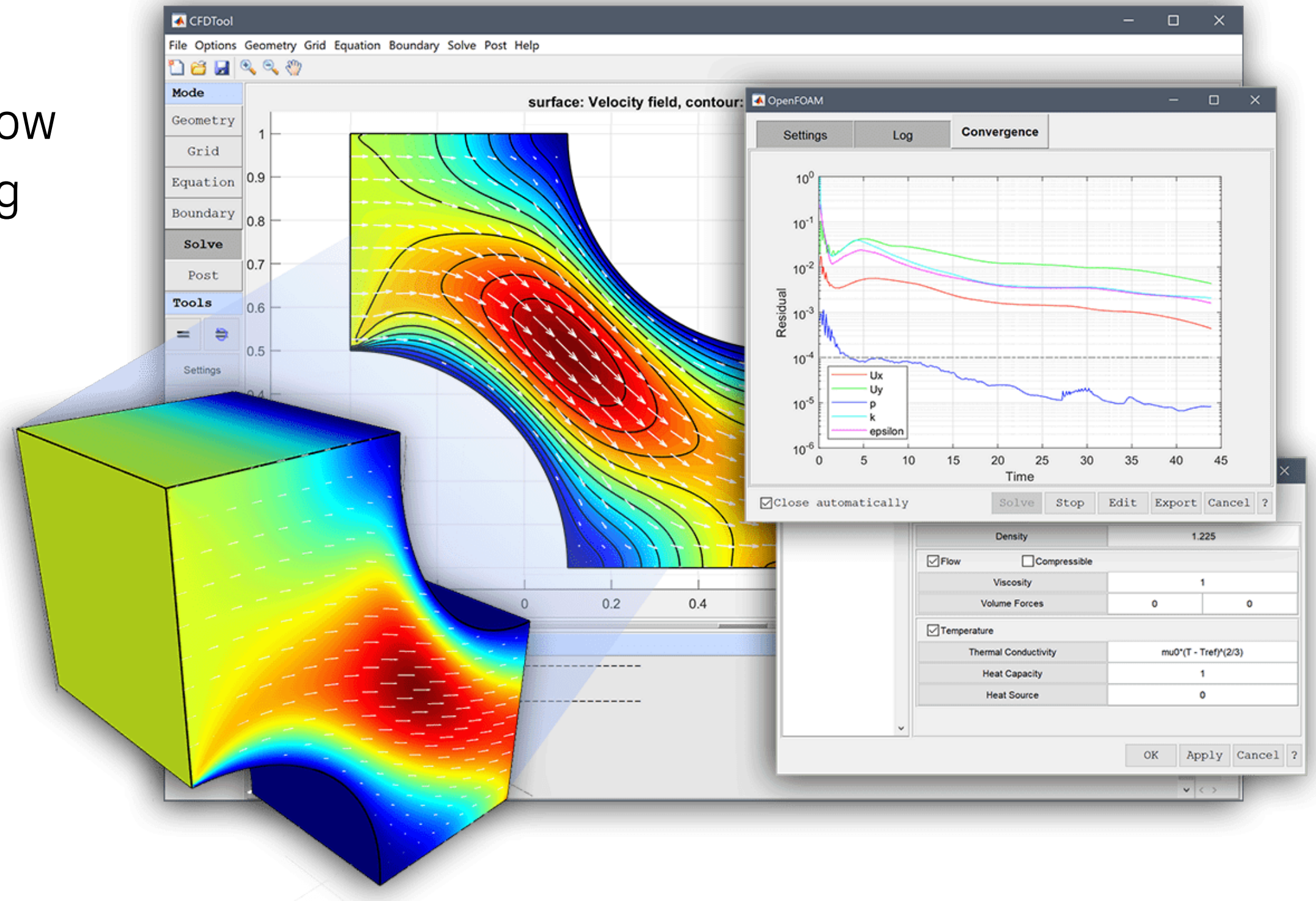
Scope of Work :

- Developed a control system which will control fan speed of **CRAH (Computer Room Air Handler)** based on Temperature sensors and differential Pressure sensor inside the Cold Aisle
- Applying this technology helps to save a lot of energy in Data centre as well making a good margin in electricity bills
- Installation of new Prosoft Gateways for high level communication
- Developing PLC and HMI programming using Rockwell system licenced software's
- Programming, graphics creation using Studio 5000 v34 and Factory Talkview Studio V13

# CFD Simulation



CFD simulations in data Centre  
Simulate the control of cold Asile & under flow  
air flow and the temperature variation during  
recovery after power outage.





**IT Hardware & Software**



**Authorised Distributors /Partners For**



# Our Partners

We are proud to work with leading brands in the following areas:

- Integrated Building Automation and Controls
- Industrial plant automation
- Intelligent Home automation system
- PLC design and programming



## Contact Us

We'd love to hear from you! Whether you have a project in mind, need a consultation, or just want to learn more about our services, feel free to reach out.

### Business Hours:

Monday - Friday: 9:00 AM - 6:00 PM

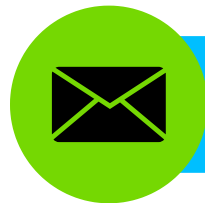
Saturday - Sunday: Closed



**+65 8468 0665**



**[www.zealcorps.com](http://www.zealcorps.com)**



**[info@zealcorps.com](mailto:info@zealcorps.com)**



**Singapore - 787805**



# Thank You

For Your Attention



Visit Our Website  
**zealcorps.com**

